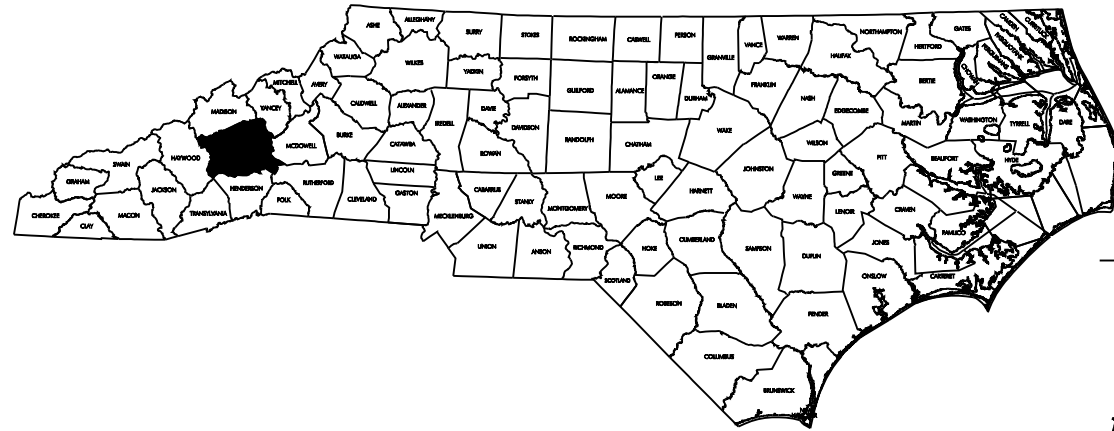


CONTRACT NO. TIP PROJECT: B-4700X

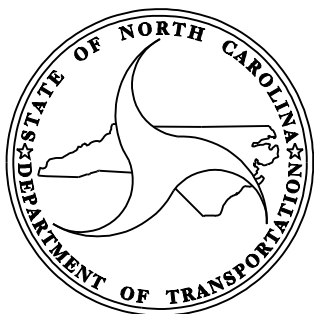
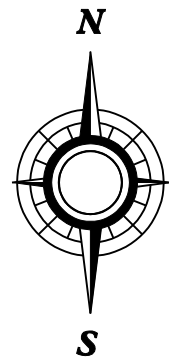
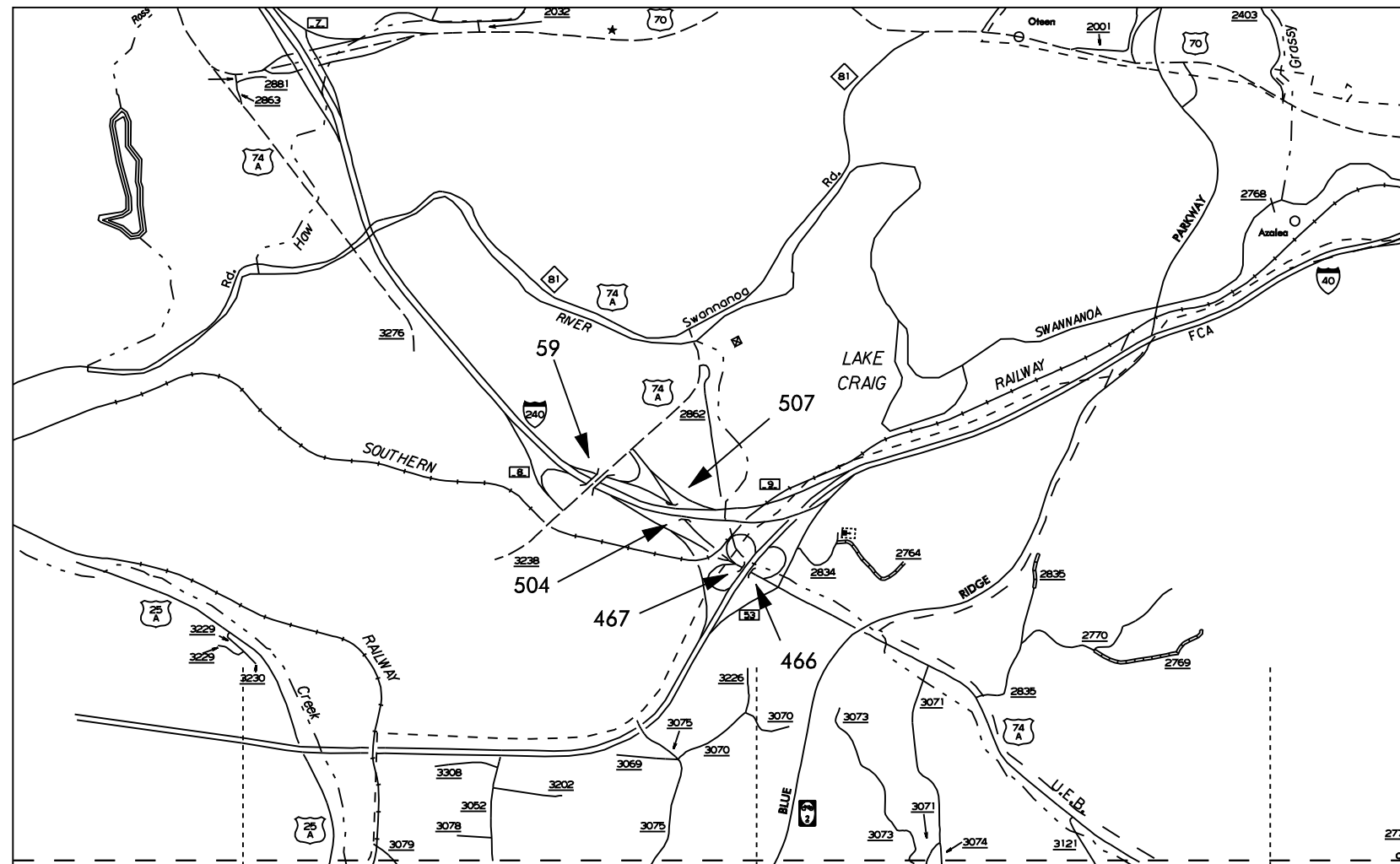


STATE OF NORTH CAROLINA
DIVISION OF HIGHWAYS

BUNCOMBE COUNTY

LOCATION: US 74A, I 240, I 40, ACROSS I 240, I 40
TYPE OF WORK: BRIDGE PRESERVATION: CLEANING
AND PAINTING OF EXISTING
BRIDGES #59, #504, #507, #467 & #466 IN BUNCOMBE COUNTY.

STATE	STATE PROJECT REFERENCE NO.	SHEET NO.	TOTAL SHEETS
N.C.	B-4700X	1	1
STATE PROJ. NO.	F.A. PROJ. NO.	DESCRIPTION	
36727.1.1	BRNHS-000S(504)	P.E.	
36727.3.23	BRNHS-000S(370)	CONST	



DESIGN DATA

PROJECT LENGTH

LENGTH STRUCTURE PROJECT = 0.50 MILE

Prepared In the Office of:
BRIDGE MANAGEMENT UNIT
 NORTH CAROLINA DEPARTMENT OF TRANSPORTATION

2006 STANDARD SPECIFICATIONS

LETTING DATE:
 JANUARY 21, 2010

DAN HOLDERMAN, PE
 STATE BRIDGE
 MANAGEMENT ENGINEER

MIKE SUMMERS
 BRIDGE MANAGEMENT
 PROJECT MANAGER



RICK NELSON, PE
 DESIGN ENGINEER

STATE OF NORTH CAROLINA
DIVISION OF HIGHWAYS

**PLAN FOR PROPOSED
TRAFFIC CONTROL**

BUNCOMBE COUNTY

LOCATION: BRIDGE NO.S 59, 504, 507, 467, AND 466.

TYPE OF WORK: TRAFFIC CONTROL FOR BRIDGE PAINTING

LEGEND

- GENERAL**
- DIRECTION OF TRAFFIC FLOW
 - NORTH ARROW
 - WORK AREA

ROADWAY STANDARD DRAWINGS

THE FOLLOWING ROADWAY STANDARDS AS APPEAR IN "ROADWAY STANDARD DRAWINGS" - PROJECT SERVICES UNIT - N.C. DEPARTMENT OF TRANSPORTATION - RALEIGH, N.C., DATED JULY 2006 ARE APPLICABLE TO THIS PROJECT AND BY REFERENCE HEREBY ARE CONSIDERED A PART OF THESE PLANS:

STD. NO.	TITLE
1101.02	TEMPORARY LANE CLOSURES
1101.04	TEMPORARY SHOULDER CLOSURES
1101.11	TRAFFIC CONTROL DESIGN TABLES
1110.02	PORTABLE WORK ZONE SIGNS
1115.01	FLASHING ARROW PANELS
1130.01	DRUMS
1135.01	CONES
1150.01	FLAGGING DEVICES
1165.01	TRUCK MOUNTED IMPACT ATTENUATOR
1180.01	SKINNY-DRUM

INDEX OF SHEETS

SHEET NO.	TITLE
TCP-1	LIST OF APPLICABLE ROADWAY STANDARD DRAWINGS, LEGEND, AND INDEX OF SHEETS
TCP-2	GENERAL NOTES
TCP-3	VICINITY MAP AND PROJECT PHASING
TCP-4	DETAIL FOR TREATMENT OF RIGHT LANE CLOSURES IN THE VICINITY OF ENTRANCE RAMP
TCP-5	DETAIL FOR TREATMENT OF RIGHT LANE CLOSURES IN THE VICINITY OF EXIT RAMP
TCP-6	DETAIL FOR TREATMENT OF RIGHT LANE CLOSURES IN THE VICINITY OF ENTRANCE RAMP WITH STOP CONDITION
TCP-7	BRIDGES 466 & 467 DETAIL SHEET FOR RIGHT LANE CLOSURE
TCP-8	BRIDGES 504 & 507 DETAIL SHEET FOR RIGHT LANE CLOSURE
TCP-9	BRIDGES 504 & 507 DETOUR ROUTE FOR RAMP CLOSURE
TCP-10	BRIDGE 59 DETAIL SHEET FOR RIGHT LANE CLOSURE
TCP-11	BRIDGE 59 DETOUR ROUTE FOR LOOP CLOSURE

TRAFFIC CONTROL DEVICES

- TYPE III BARRICADE
- CONE
- DRUM SKINNY DRUM
- FLASHING ARROW PANEL (TYPE C)
- STATIONARY SIGN
- PORTABLE SIGN
- STATIONARY OR PORTABLE SIGN
- PORTABLE CONCRETE BARRIER
- TEMPORARY CRASH CUSHION
- CHANGEABLE MESSAGE SIGN
- TRUCK MOUNTED IMPACT ATTENUATOR (TMIA)
- POLICE
- FLAGGER

WBS 36727.3.23

TIP PROJECT: B-4700X

I2/2/2009 U:\TrafficControl\B-4700X Buncombe\TCP\Plan Sheets\B-4700X_tcp.psh_01.dgn k.wieskamp

APPROVED: DATE: 12/21/2009	PLAN PREPARED BY:	Stantec Consulting Services Inc. Suite 300, 801 Jones Franklin Road Raleigh, NC 27606 Tel. 919.851.6866 Fax. 919.851.7024 www.stantec.com
	BETSY L. WATSON, PE KELLIE L. WIESKAMP, EI	TRAFFIC CONTROL ENGINEER TRANSPORTATION DESIGNER

GENERAL NOTES

CHANGES MAY BE REQUIRED WHEN PHYSICAL DIMENSIONS IN THE DETAIL DRAWINGS, STANDARD DETAILS AND ROADWAY DETAILS ARE NOT ATTAINABLE TO MEET FIELD CONDITIONS, OR RESULT IN DUPLICATE, OR UNDESIRED OVERLAPPING OF DEVICES. MODIFICATION MAY INCLUDE: MOVING, SUPPLEMENTING, COVERING OR REMOVAL OF DEVICES, AS DIRECTED BY THE ENGINEER.

THE FOLLOWING GENERAL NOTES APPLY AT ALL TIMES FOR THE DURATION OF THE CONSTRUCTION PROJECT, EXCEPT WHEN OTHERWISE NOTED IN THE PLAN, OR DIRECTED BY THE ENGINEER.

LANE CLOSURE TIME RESTRICTIONS

A) DO NOT CLOSE OR NARROW TRAVEL LANES AS FOLLOWS:

ROAD NAME	DAY AND TIME RESTRICTIONS
ALL ROADS	6:00 A.M.-7:00 P.M. MONDAY THRU SUNDAY

B) DO NOT CLOSE OR NARROW TRAVEL LANES DURING HOLIDAYS AND SPECIAL EVENTS AS FOLLOWS:

ROAD NAME
ALL ROADS

HOLIDAY

- 1) FOR ANY UNEXPECTED OCCURRENCE THAT CREATES UNUSUALLY HIGH TRAFFIC VOLUMES, AS DIRECTED BY THE ENGINEER.
- 2) FOR NEW YEAR'S, BETWEEN THE HOURS OF 7:00 P.M. DECEMBER 31st TO 6:00 A.M. JANUARY 2nd. IF NEW YEAR'S DAY IS ON A FRIDAY, SATURDAY, SUNDAY, OR MONDAY THEN UNTIL 6:00 A.M. THE FOLLOWING TUESDAY.
- 3) FOR EASTER, BETWEEN THE HOURS OF 7:00 P.M. THURSDAY AND 6:00 A.M. MONDAY.
- 4) FOR MEMORIAL DAY, BETWEEN THE HOURS OF 7:00 P.M. FRIDAY TO 6:00 A.M. TUESDAY.
- 5) FOR INDEPENDENCE DAY, BETWEEN THE HOURS OF 7:00 P.M. THE DAY BEFORE INDEPENDENCE DAY AND 6:00 A.M. THE DAY AFTER INDEPENDENCE DAY. IF INDEPENDENCE DAY IS ON A FRIDAY, SATURDAY, SUNDAY OR MONDAY; THEN BETWEEN THE HOURS OF 7:00 P.M. THE THURSDAY BEFORE INDEPENDENCE DAY AND 6:00 A.M. THE TUESDAY AFTER INDEPENDENCE DAY.
- 6) FOR LABOR DAY, BETWEEN THE HOURS OF 7:00 P.M. FRIDAY AND 6:00 A.M. TUESDAY.
- 7) FOR THANKSGIVING DAY, BETWEEN THE HOURS OF 7:00 P.M. TUESDAY TO 6:00 A.M. MONDAY.
- 8) FOR CHRISTMAS, BETWEEN THE HOURS OF 7:00 P.M. THE FRIDAY BEFORE THE WEEK OF CHRISTMAS DAY AND 6:00 A.M. THE FOLLOWING TUESDAY AFTER THE WEEK OF CHRISTMAS.

LANE AND SHOULDER CLOSURE REQUIREMENTS

- C) REMOVE LANE CLOSURE DEVICES FROM THE LANE WHEN WORK IS NOT BEING PERFORMED BEHIND THE LANE CLOSURE OR WHEN A LANE CLOSURE IS NO LONGER NEEDED, OR AS DIRECTED BY THE ENGINEER.
 - D) WHEN PERSONNEL AND/OR EQUIPMENT ARE WORKING WITHIN 15 FT OF AN OPEN TRAVEL LANE, CLOSE THE NEAREST OPEN SHOULDER USING ROADWAY STANDARD DRAWING NO. 1101.04 UNLESS THE WORK AREA IS PROTECTED BY BARRIER OR GUARDRAIL OR A LANE CLOSURE IS INSTALLED.
 - E) WHEN PERSONNEL AND/OR EQUIPMENT ARE WORKING ON THE SHOULDER ADJACENT TO AN UNDIVIDED FACILITY AND WITHIN 5 FT OF AN OPEN TRAVEL LANE, CLOSE THE NEAREST OPEN TRAVEL LANE USING ROADWAY STANDARD DRAWING 1101.01, SHEET 1 UNLESS THE WORK AREA IS PROTECTED BY BARRIER OR GUARDRAIL.
- WHEN PERSONNEL AND/OR EQUIPMENT ARE WORKING ON THE SHOULDER ADJACENT TO A DIVIDED FACILITY AND WITHIN 10 FT OF AN OPEN TRAVEL LANE, CLOSE THE NEAREST OPEN TRAVEL LANE USING SHEET TCP-4 UNLESS THE WORK AREA IS PROTECTED BY BARRIER OR GUARDRAIL.
- F) WHEN PERSONNEL AND/OR EQUIPMENT ARE WORKING WITHIN A LANE OF TRAVEL OF AN UNDIVIDED OR DIVIDED FACILITY, CLOSE THE LANE ACCORDING TO THE TRAFFIC CONTROL PLANS, ROADWAY STANDARD DRAWINGS OR AS DIRECTED BY THE ENGINEER. CONDUCT THE WORK SO THAT ALL PERSONNEL AND/OR EQUIPMENT REMAIN WITHIN THE CLOSED TRAVEL LANE.
 - G) DO NOT WORK SIMULTANEOUSLY WITHIN 15 FT ON BOTH SIDES OF AN OPEN TRAVELWAY RAMP OR LOOP WITHIN THE SAME LOCATION UNLESS PROTECTED WITH GUARDRAIL OR BARRIER.
 - H) DO NOT INSTALL MORE THAN 2 MILES OF LANE CLOSURE ON I-240 MEASURED FROM THE BEGINNING OF THE MERGE TAPER TO THE END OF THE LANE CLOSURE.
 - I) DO NOT INSTALL MORE THAN 1 SIMULTANEOUS LANE CLOSURE IN ANY ONE DIRECTION ON I-240 OR US 74A.

TRAFFIC PATTERN ALTERATIONS

J) NOTIFY THE ENGINEER TWENTY ONE (21) CALENDAR DAYS PRIOR TO ANY TRAFFIC PATTERN ALTERATION.


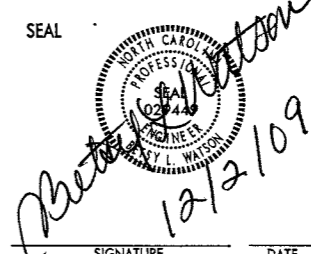

SIGNING

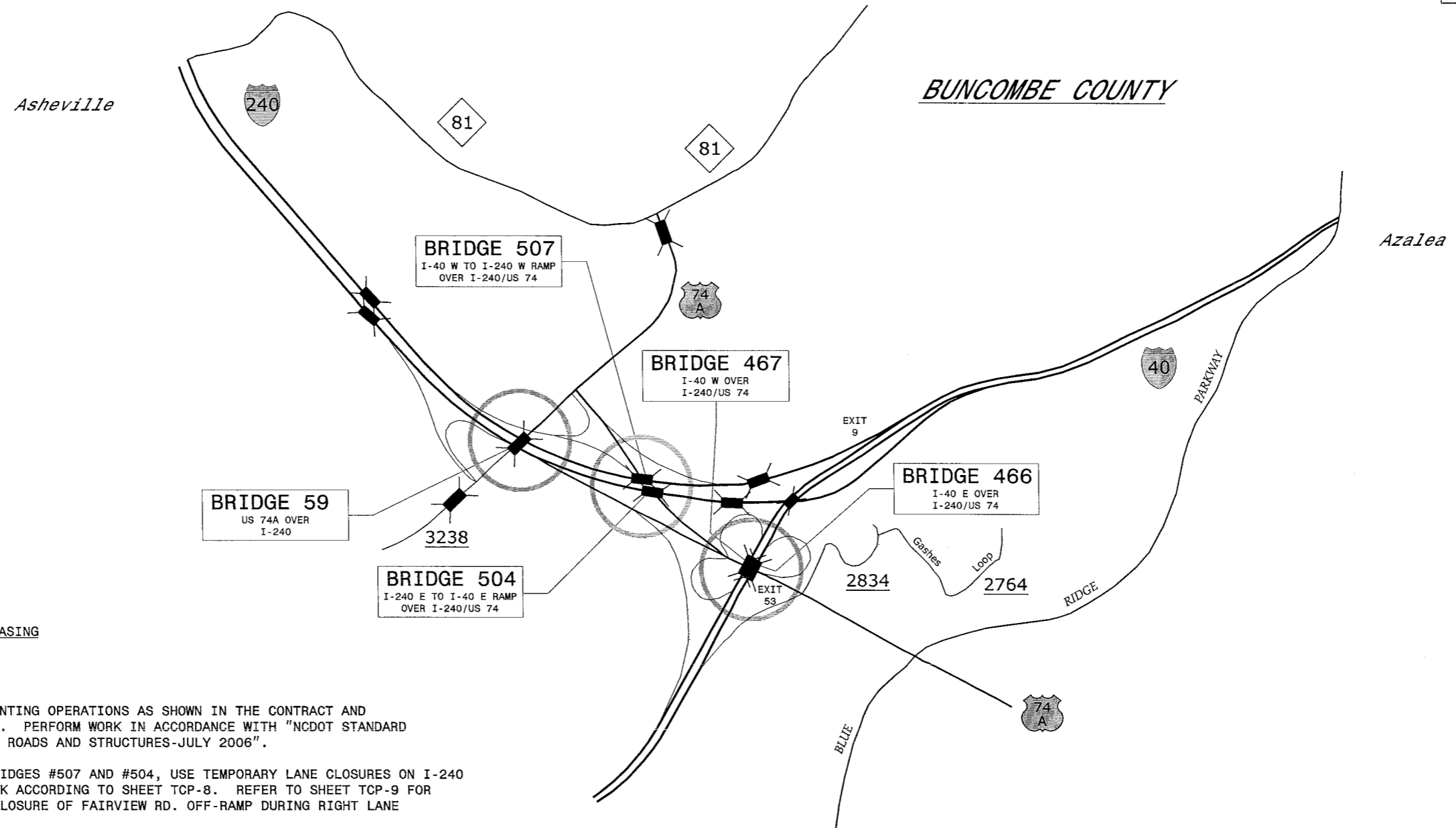
K) ENSURE ALL SIGNING IS IN PLACE PRIOR TO ALTERING ANY TRAFFIC PATTERN.

MISCELLANEOUS

- L) DO NOT PERFORM WORK FROM THE ROADWAY ON TOP OF THE STRUCTURE.
- M) ENSURE THE OVERSIZE/OVERWEIGHT PERMIT UNIT (919) 733-4740 HAS BEEN ADVISED OF THE ONGOING TRAFFIC OPERATIONS THROUGH THE DIVISION OFFICE.
- N) LAW ENFORCEMENT MAY BE USED TO MAINTAIN TRAFFIC THROUGH THE WORK AREA/INTERSECTIONS, AS DIRECTED BY THE ENGINEER.

I:\2009\c\TrafficControl\B-4700X Buncombe\TCP\Plan Sheets\B-4700X_tcp.psf-02.dgn
kvetestcomp

 Stantec <small>Stantec Consulting Services Inc. Suite 300, 801 Jones Franklin Road Raleigh, NC 27606 Tel: 919.851.6886 Fax: 919.851.7024 www.stantec.com</small>	SEAL	 <i>Ashley L. Watson</i> 12/2/09	PROJECT NOTES GENERAL NOTES	REVISIONS <table border="1" style="width: 100%; border-collapse: collapse;"> <tr><td> </td><td> </td></tr> <tr><td> </td><td> </td></tr> <tr><td> </td><td> </td></tr> <tr><td> </td><td> </td></tr> </table>															
	<table border="1" style="width: 100%; border-collapse: collapse;"> <tr><td>SCALE:</td><td>NONE</td></tr> <tr><td>DATE:</td><td>NOV. 2009</td></tr> <tr><td>DWG. BY:</td><td>KLW</td></tr> <tr><td>DESIGN BY:</td><td>BLW</td></tr> <tr><td>REVIEWED BY:</td><td>BLW</td></tr> </table>	SCALE:	NONE	DATE:	NOV. 2009	DWG. BY:	KLW	DESIGN BY:	BLW	REVIEWED BY:	BLW	<table border="1" style="width: 100%; border-collapse: collapse;"> <tr><td>SIGNATURE</td><td>DATE</td></tr> <tr><td> </td><td> </td></tr> </table>	SIGNATURE	DATE			<table border="1" style="width: 100%; border-collapse: collapse;"> <tr><td>CADD FILE</td></tr> <tr><td> </td></tr> </table>	CADD FILE	
SCALE:	NONE																		
DATE:	NOV. 2009																		
DWG. BY:	KLW																		
DESIGN BY:	BLW																		
REVIEWED BY:	BLW																		
SIGNATURE	DATE																		
CADD FILE																			



TRAFFIC CONTROL PHASING

STEP 1:

PERFORM BRIDGE PAINTING OPERATIONS AS SHOWN IN THE CONTRACT AND CONSTRUCTION PLANS. PERFORM WORK IN ACCORDANCE WITH "NCDOT STANDARD SPECIFICATIONS FOR ROADS AND STRUCTURES-JULY 2006".

WHEN WORKING ON BRIDGES #507 AND #504, USE TEMPORARY LANE CLOSURES ON I-240 TO PERFORM THE WORK ACCORDING TO SHEET TCP-8. REFER TO SHEET TCP-9 FOR DETOUR ROUTE FOR CLOSURE OF FAIRVIEW RD. OFF-RAMP DURING RIGHT LANE CLOSURES.

WHEN WORKING ON BRIDGES #466 AND #467, USE TEMPORARY LANE CLOSURES ON I-240/US 74 TO PERFORM THE WORK ACCORDING TO SHEET TCP-7.

MAINTAIN ALL LOOPS AT BRIDGES #466 AND #467. IN THE EVENT THE WORK AREA ENCROACHES INTO AN EXIT LOOP DECELERATION TAPER FOR THE I-40 W ON-LOOP, USE SHEET TCP-5 TO MAINTAIN EXIT LOOP TRAFFIC.

WHEN WORKING ON BRIDGE #59, USE TEMPORARY LANE CLOSURES ON I-240 TO PERFORM THE WORK ACCORDING TO SHEET TCP-10. REFER TO SHEET TCP-11 FOR DETOUR ROUTE FOR CLOSURE OF FAIRVIEW RD. ON-LOOP DURING RIGHT LANE CLOSURES.

WHEN RIGHT LANE CLOSURES ENCROACH THROUGH THE VICINITY OF AN ENTRANCE RAMP UPSTREAM OF THE WORK AREA AT BRIDGE #59, USE SHEET TCP-4 IN CONJUNCTION WITH A RIGHT LANE CLOSURE AS SHOWN ON RSD 1101.02 SHEET 3 OF 9.

AT THE END OF EACH DAY'S OPERATIONS MOVE EQUIPMENT TO STAGING AREA AT LEAST 40 FEET AWAY FROM ANY TRAVEL LANES AS APPROVED BY THE ENGINEER AND REMOVE LANE CLOSURES. WHEN NOT BEING USED TO CLOSE A LANE, DRUMS MAY EITHER BE TOTALLY REMOVED OR BE MOVED TO OUTSIDE OF SHOULDER SUCH THAT THEY DO NOT CLOSE THE SHOULDER.

STEP 2:

UPON COMPLETION OF THE PROJECT, REMOVE ALL TRAFFIC CONTROL DEVICES.

12/2/2009
 UsTrafficControl\B-4700X Buncombe\TCP\Plan Sheets\B-4700X_tcp_psh_03.dgn
 K:\ask\mp

Stantec
 Stantec Consulting Services Inc.
 Suite 300, 801 Jones Franklin Road
 Raleigh, NC
 27606
 Tel: 919.851.6886
 Fax: 919.851.7024
 www.stantec.com

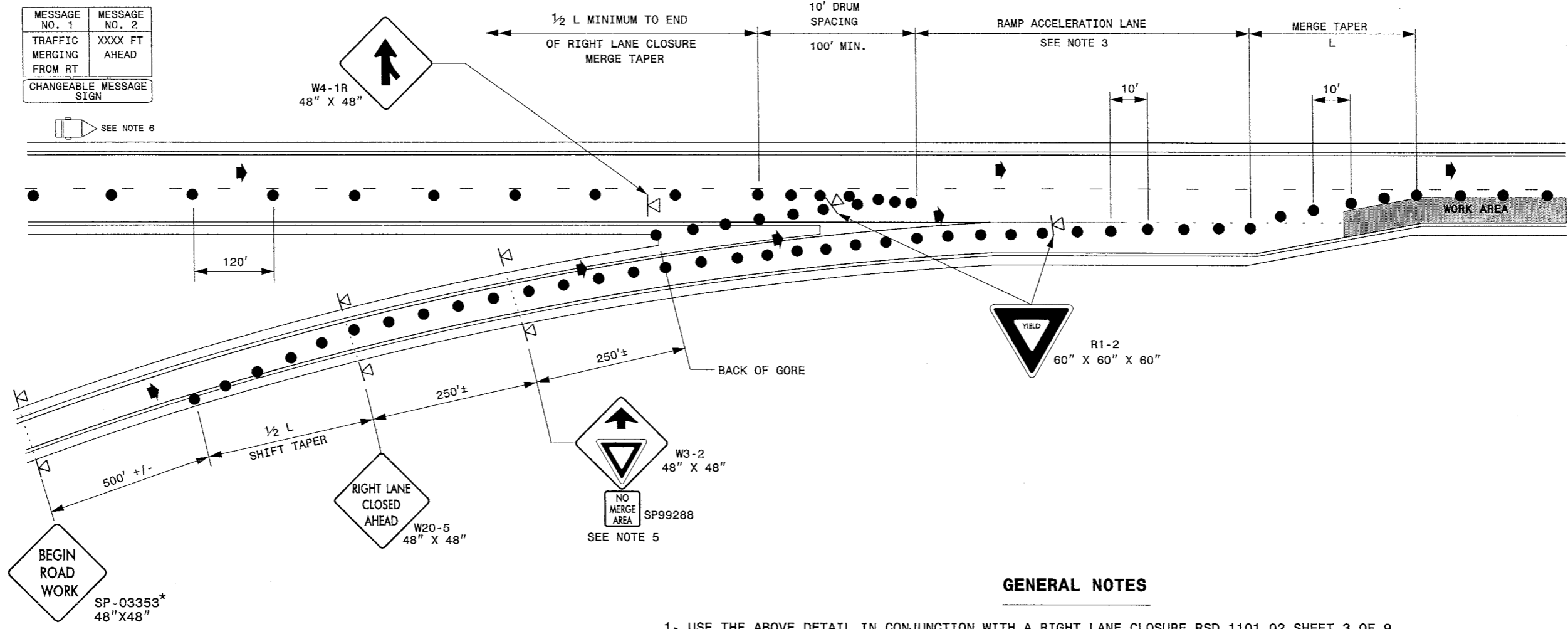
SEAL

Bruce L. Watson
12/2/09

SIGNATURE DATE

**BUNCOMBE COUNTY BRIDGE PAINTING
VICINITY MAP
TRAFFIC CONTROL PHASING**

SCALE:	NONE		REVISIONS <table border="1"> <tr><td> </td><td> </td></tr> <tr><td> </td><td> </td></tr> <tr><td> </td><td> </td></tr> <tr><td> </td><td> </td></tr> </table>								
DATE:	NOV. 2009										
DWG. BY:	KLW										
DESIGN BY:	BLW										
REVIEWED BY:	BLW	CADD FILE									



GENERAL NOTES

- 1- USE THE ABOVE DETAIL IN CONJUNCTION WITH A RIGHT LANE CLOSURE RSD 1101.02 SHEET 3 OF 9.
- 2- MOUNT SIGNS SHOWN A MINIMUM OF 5 FEET ABOVE THE PAVEMENT ELEVATION.
- 3- IF EXISTING ACCELERATION DISTANCE OR A MINIMUM OF 400' ACCELERATION DISTANCE CANNOT BE PROVIDED, CONTACT THE WORK ZONE TRAFFIC CONTROL UNIT FOR FURTHER GUIDANCE.
- 4- CLOSE THE RIGHT LANE SUFFICIENTLY IN ADVANCE TO STABILIZE MOTOR VEHICLE TRAFFIC FLOW BEFORE THE MERGE AS SHOWN ON RSD 1101.02 SHEET 3 OF 9.
- 5- INSTALL SP99288 BELOW THE YIELD AHEAD SIGN (AS SHOWN) TO ALERT MOTORISTS THAT THE ACCELERATION DISTANCE HAS BEEN REDUCED.
- 6- COORDINATE WITH THE ENGINEER FOR LOCATION OF CMS.
- 7- USE THE ABOVE DETAIL ALONG I-240 FOR THE FOLLOWING SITUATION:

BRIDGE NO. 59, I-240 EB ON-RAMP FROM US 74A FAIRVIEW RD.

LEGEND	
	CHANGEABLE MESSAGE SIGN (CMS)
	DRUM
	PORTABLE SIGN
	DIRECTION OF TRAFFIC FLOW

Stantec Consulting Services Inc.
 Suite 300, 801 Jones Franklin Road
 Raleigh, NC 27606
 Tel: 919.851.6886
 Fax: 919.851.7024
 www.stantec.com

SEAL

Blair Watson
 12/2/09

SIGNATURE DATE

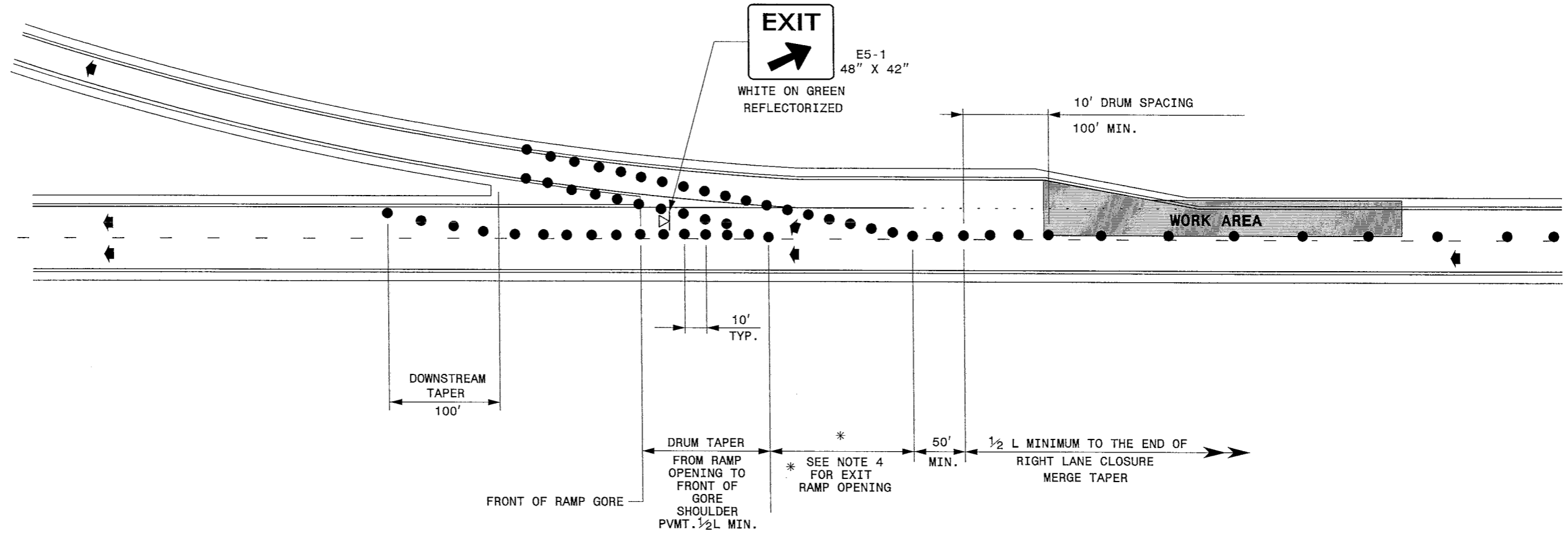
RIGHT LANE CLOSURES THROUGH ENTRANCE RAMP

SCALE:	NONE
DATE:	NOV. 2009
DWG. BY:	KLW
DESIGN BY:	BLW
REVIEWED BY:	BLW

REVISIONS

CADD FILE

12/2/2009
 U:\TrafficControl\B-4700X Buncombe\TCP\Plan Sheets\B-4700X_tcp_psh_04.dgn
 Krtaskemp



LEGEND	
	TRUCK MOUNTED IMPACT ATTENUATOR
	DRUM
	PORTABLE SIGN
	DIRECTION OF TRAFFIC FLOW

GENERAL NOTES

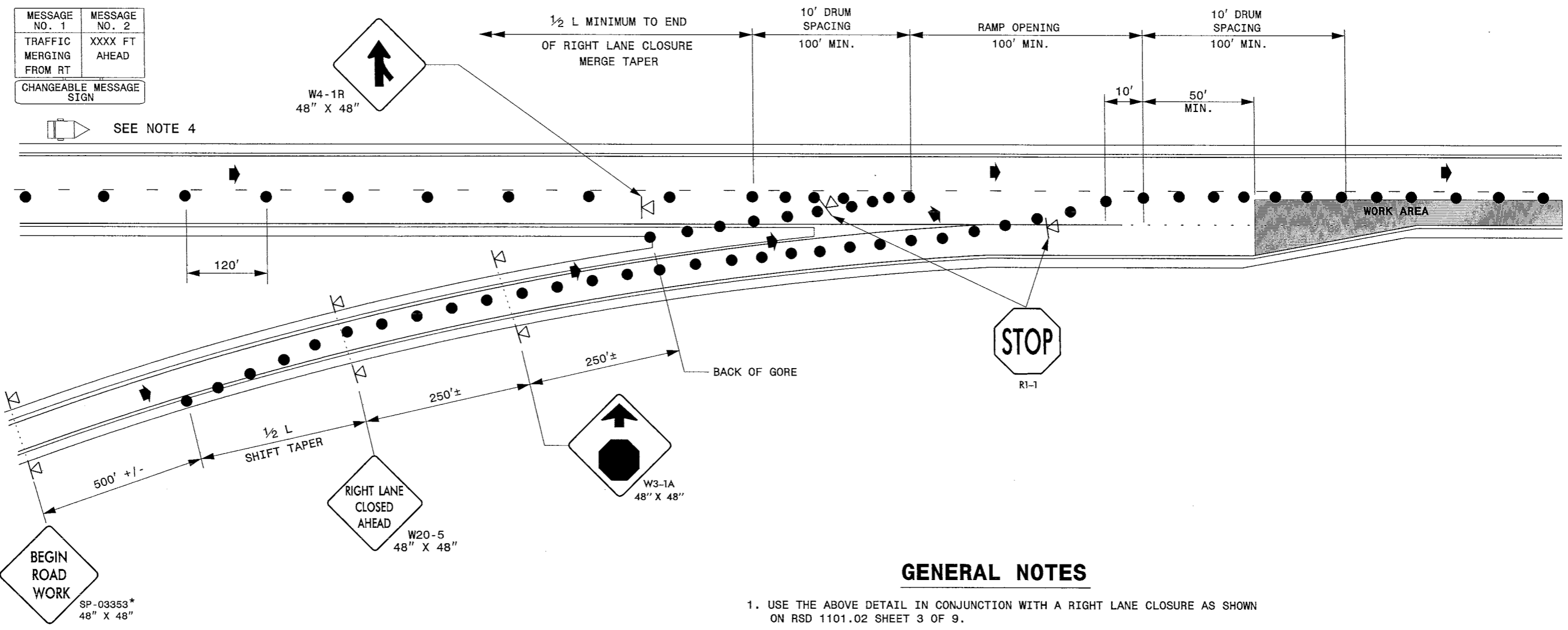
- 1- USE THE ABOVE DETAILS IN CONJUNCTION WITH A RIGHT LANE CLOSURE AS SHOWN ON RSD 1101.02 SHEET 3 OF 9.
- 2- MOUNT EXIT SIGNS A MINIMUM OF 7 FEET ABOVE THE PAVEMENT ELEVATION.
- 3- USE THE ABOVE DETAIL FOR LANE CLOSURES ALONG I-240 FOR THE FOLLOWING SITUATIONS:
 BRIDGE NO. 466: I-240 W/US 74A W TO I-40 W LOOP
 BRIDGE NO. 467: I-240 W/US 74A W TO I-40 W LOOP

 THIS DETAIL MAY NOT BE NECESSARY DEPENDING ON SIZE OF BRIDGE PAINTING STAGING AREA. CONSULT THE ENGINEER FOR GUIDANCE IF NEEDED.
- * 4- USE EXISTING RAMP OPENING LENGTH WHERE POSSIBLE. USE NO LESS THAN 1/2 ORIGINAL LENGTH. IF 1/2 ORIGINAL LENGTH CANNOT BE OBTAINED, CONTACT THE WORK ZONE TRAFFIC CONTROL UNIT FOR FURTHER GUIDANCE.

12/2/2009
 U:\Projects\Traffic\TrafficControl\B-4700X Buncombe\TCP\Plan Sheets\B-4700X_tcp_psh_05.dgn
 K:\eskemp

 Stantec Stantec Consulting Services Inc. Suite 300, 801 Jones Franklin Road Raleigh, NC 27606 Tel. 919.851.6866 Fax. 919.851.7024 www.stantec.com	SEAL 	RIGHT LANE CLOSURE THROUGH EXIT RAMP						
	SIGNATURE <i>Peter Watson</i>	DATE 12/2/09	SCALE: NONE DATE: NOV. 2009 DWG. BY: K LW DESIGN BY: BLW REVIEWED BY: BLW	<table border="1"> <thead> <tr> <th>REVISIONS</th> </tr> </thead> <tbody> <tr><td> </td></tr> <tr><td> </td></tr> <tr><td> </td></tr> <tr><td> </td></tr> </tbody> </table>	REVISIONS			
REVISIONS								

MESSAGE NO. 1	MESSAGE NO. 2
TRAFFIC MERGING FROM RT	XXXX FT AHEAD
CHANGEABLE MESSAGE SIGN	



GENERAL NOTES

1. USE THE ABOVE DETAIL IN CONJUNCTION WITH A RIGHT LANE CLOSURE AS SHOWN ON RSD 1101.02 SHEET 3 OF 9.
2. MOUNT SIGNS SHOWN A MINIMUM OF 5 FEET ABOVE THE PAVEMENT ELEVATION.
3. CLOSE THE RIGHT LANE SUFFICIENTLY IN ADVANCE TO STABILIZE MOTOR VEHICLE TRAFFIC FLOW BEFORE THE MERGE AS SHOWN ON RSD 1101.02 SHEET 3 OF 9.
4. COORDINATE WITH THE ENGINEER FOR LOCATION OF CMS.
5. USE THE ABOVE DETAIL ALONG I-40 FOR THE FOLLOWING SITUATIONS:
 BRIDGE NO. 466 LOOP FROM I-40 EB TO I-240/US 74 WB
 BRIDGE NO. 467 LOOP FROM I-40 WB TO I-240/US 74 EB

LEGEND	
	CHANGEABLE MESSAGE SIGN (CMS)
	DRUM
	PORTABLE SIGN
	DIRECTION OF TRAFFIC FLOW

12/2/2009
 U:\TrafficControl\B-4700X Buncombe\TCP\Plan Sheets\B-4700X_tcp.psf_06.dgn
 ketaskamp

Stantec Consulting Services Inc.
 Suite 300, 801 Jones Franklin Road
 Raleigh, NC 27606
 Tel: 919.851.6886
 Fax: 919.851.7024
 www.stantec.com

SEAL

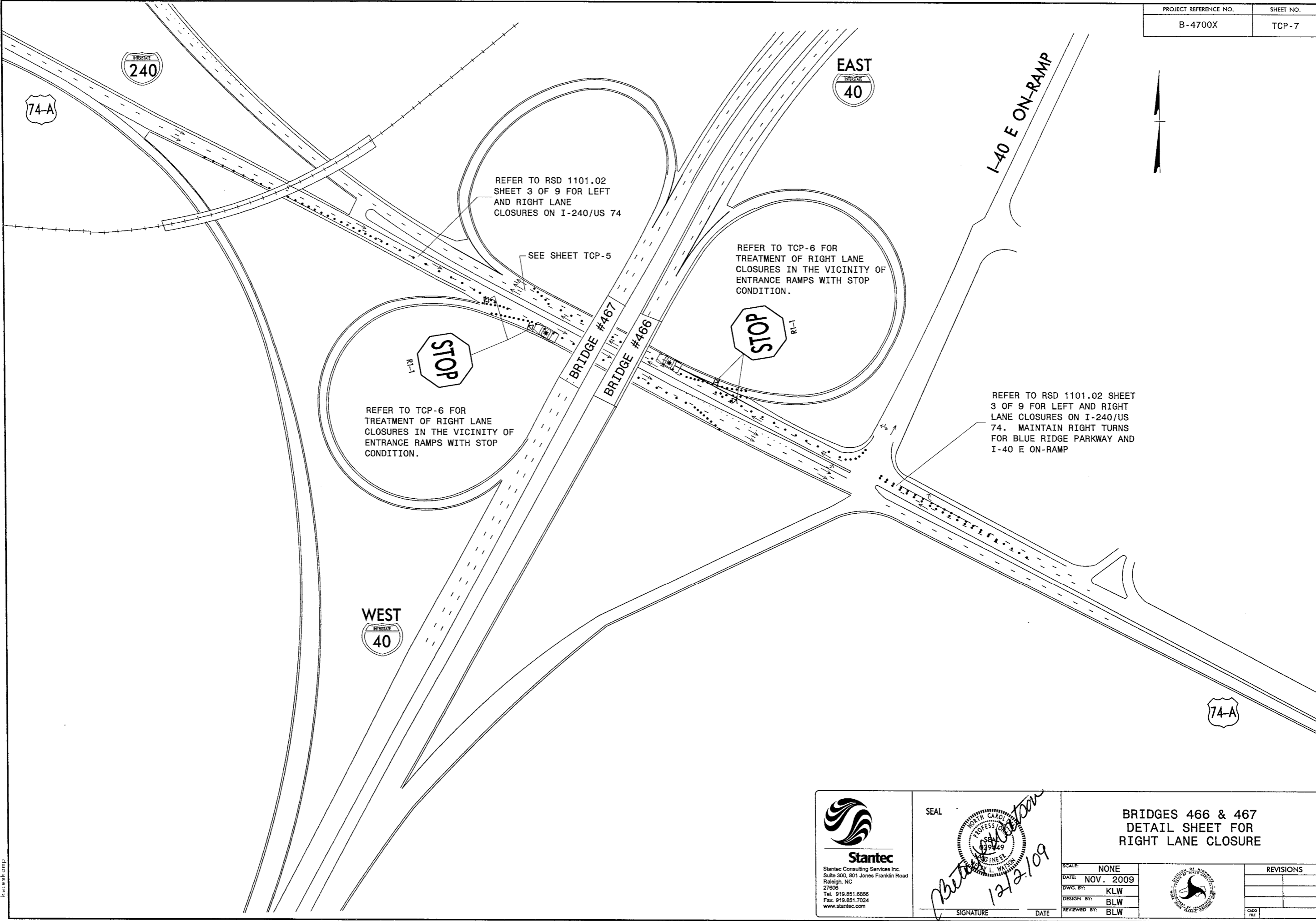
I. Watson
 12/2/09
 SIGNATURE DATE

RIGHT LANE CLOSURE THROUGH ENTRANCE RAMP WITH STOP CONDITION

SCALE:	NONE
DATE:	NOV. 2009
DWG. BY:	KLW
DESIGN BY:	BLW
REVIEWED BY:	BLW

REVISIONS	

CADD FILE



12/2/2009
 U:\TrafficControl\B-4700X Buncombe\TCP\Plan Sheets\B-4700X_tcp_psh_07.dgn
 ketiskemp

Stantec
 Stantec Consulting Services Inc.
 Suite 300, 801 Jones Franklin Road
 Raleigh, NC
 27606
 Tel. 919.851.6866
 Fax. 919.851.7024
 www.stantec.com

SEAL

L. Watson
 12/2/09

SIGNATURE DATE

**BRIDGES 466 & 467
 DETAIL SHEET FOR
 RIGHT LANE CLOSURE**

SCALE:	NONE
DATE:	NOV. 2009
DWG. BY:	KLW
DESIGN BY:	BLW
REVIEWED BY:	BLW

REVISIONS	

CADD
 P/E



FAIRVIEW RD.

RAMP CLOSED
SEE SHEET TCP-9
FOR DETOUR ROUTE.

REFER TO RSD 1101.02
SHEET 3 OF 9 FOR LEFT
AND RIGHT LANE CLOSURES
ALONG I-240 W.

MESSAGE NO. 1	MESSAGE NO. 2
EXIT 8 CLOSED	USE EXIT 7 US 70
CHANGEABLE MESSAGE SIGN	



BRIDGE #507

BRIDGE #504



12/2/2009
US Traffic Control\B-4700X Buncombe\TCP\Plan Sheets\B-4700X_tcp_psh_08.dgn
kretskamp

Stantec
Stantec Consulting Services Inc.
Suite 300, 801 Jones Franklin Road
Raleigh, NC
27606
Tel. 919.851.6868
Fax. 919.851.7024
www.stantec.com

SEAL

Peter Watson
12/2/09

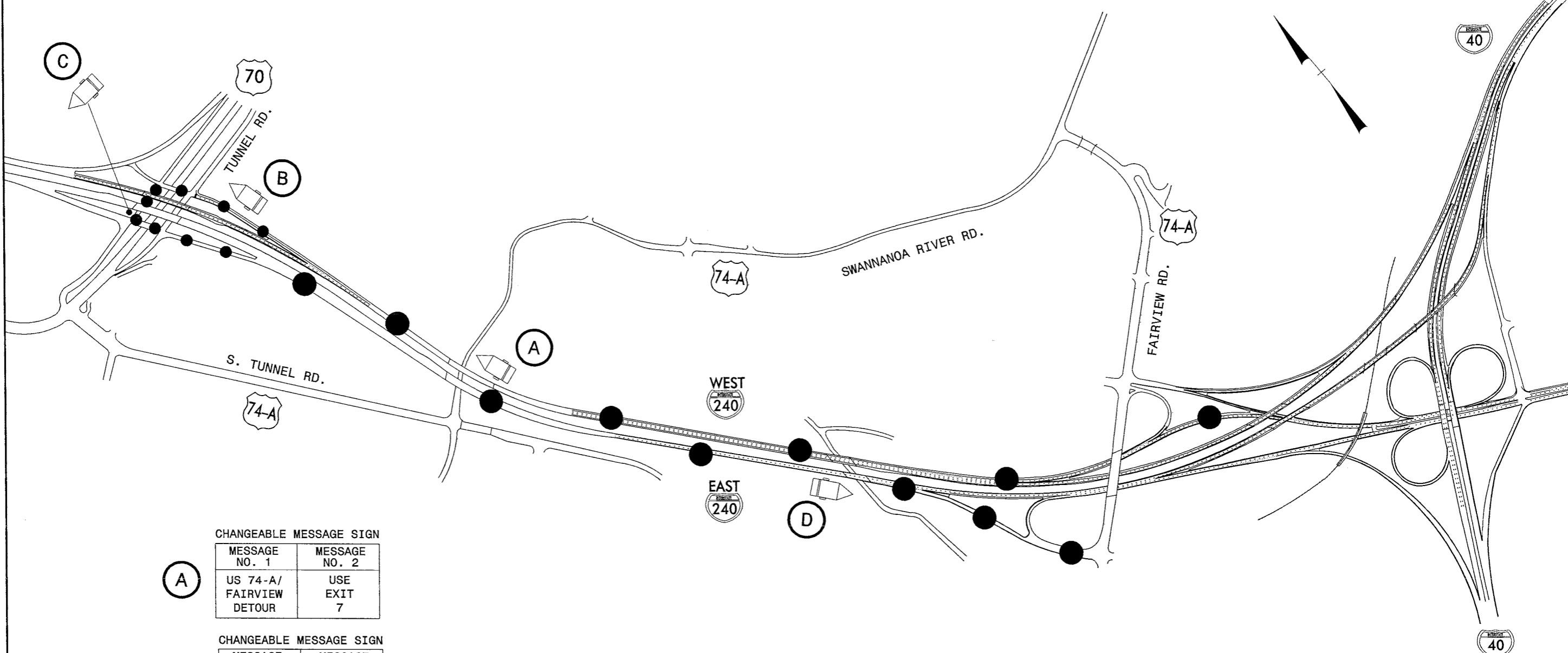
SIGNATURE DATE

**BRIDGES 504 & 507
DETAIL SHEET FOR
RIGHT LANE CLOSURE**

SCALE:	NONE
DATE:	NOV. 2009
DWG. BY:	KLW
DESIGN BY:	BLW
REVIEWED BY:	BLW



REVISIONS	



CHANGEABLE MESSAGE SIGN	
MESSAGE NO. 1	MESSAGE NO. 2
A US 74-A/ FAIRVIEW DETOUR	USE EXIT 7
CHANGEABLE MESSAGE SIGN	
MESSAGE NO. 1	MESSAGE NO. 2
B US 74-A/ FAIRVIEW DETOUR	LEFT AT SECOND LIGHT
CHANGEABLE MESSAGE SIGN	
MESSAGE NO. 1	MESSAGE NO. 2
C US 74-A/ FAIRVIEW DETOUR	NEXT LEFT
CHANGEABLE MESSAGE SIGN	
MESSAGE NO. 1	MESSAGE NO. 2
D US 74-A/ FAIRVIEW DETOUR	USE EXIT 8

● = DETOUR ROUTE FOR FAIRVIEW RD. RAMP CLOSURE

12/2/2009 UsTrafficControl\B-4700X Buncombe\TCP\Plan Sheets\B-4700X_tcp_psh_0.dgn ketaskamp

Stantec
Stantec Consulting Services Inc.
Suite 300, 801 Jones Franklin Road
Raleigh, NC
27606
Tel. 919.851.6866
Fax. 919.851.7024
www.stantec.com

SEAL

Peter L. Watson
12/2/09

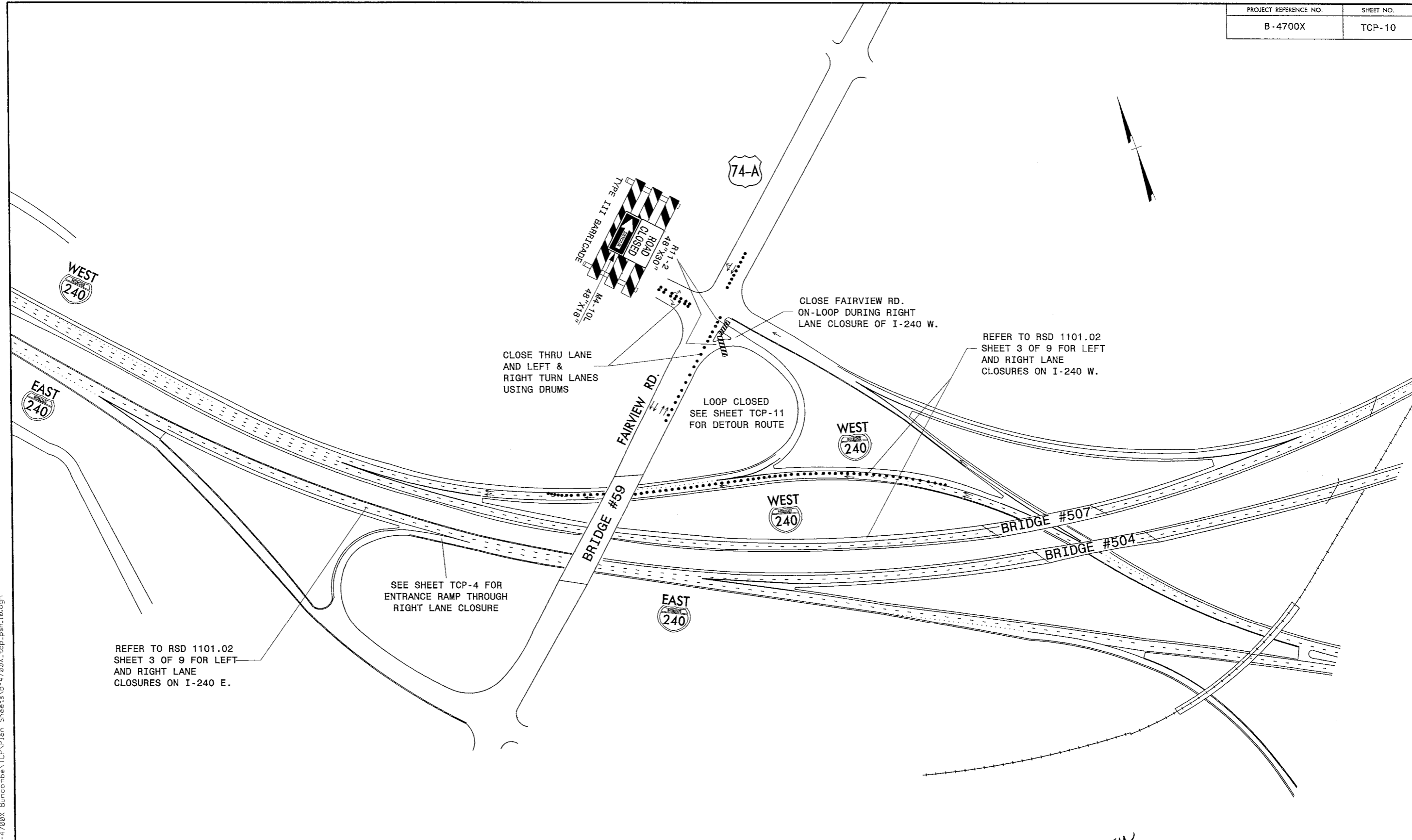
SIGNATURE DATE

**BRIDGES 504 & 507
DETOUR ROUTE FOR
RAMP CLOSURE**

SCALE:	NONE
DATE:	NOV. 2009
DWG. BY:	KLW
DESIGN BY:	BLW
REVIEWED BY:	BLW

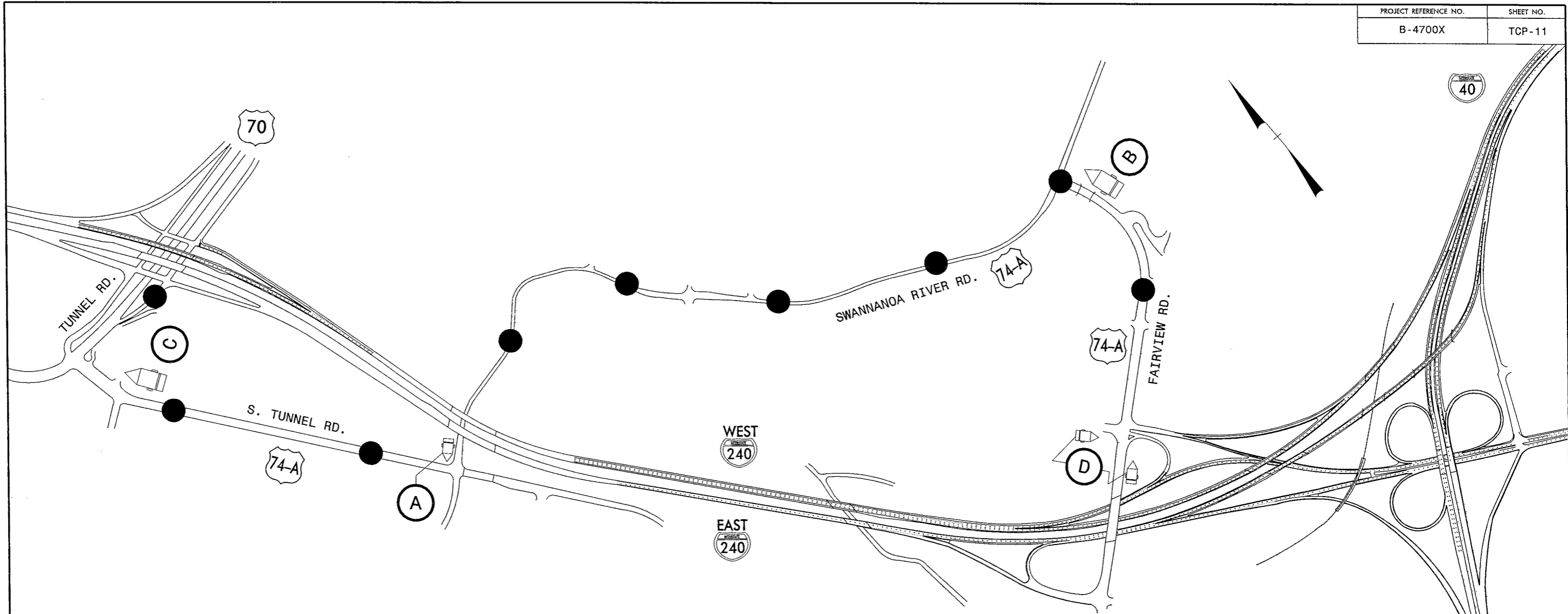
REVISIONS	

CADD FILE



12/2/2009
 I:\TrafficControl\B-4700X Buncombe\TCP\Plan Sheets\B-4700X_tcp.psh_10.dgn
 kuleskmp

<p>Stantec Stantec Consulting Services Inc. Suite 300, 801 Jones Franklin Road Raleigh, NC 27608 Tel. 919.851.6886 Fax. 919.851.7024 www.stantec.com</p>	SEAL 	BRIDGE 59 DETAIL SHEET FOR RIGHT LANE CLOSURE							
	SIGNATURE <i>Matthew Watson</i> DATE 12/2/09	SCALE: NONE DATE: NOV. 2009 DWG. BY: K LW DESIGN BY: BLW REVIEWED BY: BLW		REVISIONS <table border="1"> <tr><td> </td><td> </td></tr> <tr><td> </td><td> </td></tr> <tr><td> </td><td> </td></tr> </table>					



- (A)** CHANGEABLE MESSAGE SIGN

MESSAGE NO. 1	MESSAGE NO. 2
I-240 NEXT RIGHT	DETOUR VIA 74A WEST
- (B)** CHANGEABLE MESSAGE SIGN

MESSAGE NO. 1	MESSAGE NO. 2
I-240 NEXT LEFT	DETOUR VIA 74A WEST
- (C)** CHANGEABLE MESSAGE SIGN

MESSAGE NO. 1	MESSAGE NO. 2
I-240 NEXT RIGHT	FOLLOW I-240 SIGNS
- (D)** CHANGEABLE MESSAGE SIGN

MESSAGE NO. 1	MESSAGE NO. 2
I-240 W RAMP CLOSED	DETOUR VIA 74A WEST

● = DETOUR ROUTE FOR CLOSURE OF FAIRVIEW RD. TO I-240 W LOOP

12/2/2009
 User: TrafficControl\B-4700X Buncombe\TCP\Plan Sheets\B-4700X_tcp_psh_11.dgn
 Kutzskamp

<p>Stantec Stantec Consulting Services Inc. Suite 300, 801 Jones Franklin Road Raleigh, NC 27606 Tel. 919.851.6868 Fax. 919.851.7024 www.stantec.com</p>	SEAL 	BRIDGE 59 DETOUR ROUTE FOR LOOP CLOSURE									
	SIGNATURE <i>K. Watson</i>	DATE 12/2/09	SCALE: NONE DATE: NOV. 2009 DWG. BY: K LW DESIGN BY: BLW REVIEWED BY: BLW	<table border="1"> <tr> <th colspan="2">REVISIONS</th> </tr> <tr> <td> </td> <td> </td> </tr> <tr> <td> </td> <td> </td> </tr> <tr> <td> </td> <td> </td> </tr> </table>	REVISIONS						
REVISIONS											